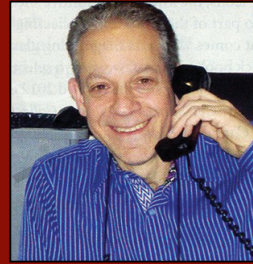


**This Stamp News Online
Feature Article was Sponsored
by Gary Posner, Inc.**

**GaryPosnerInc@aol.com
www.garyposnerinc.com**

***“Give me a call and let’s
talk about the goals for your
collection—or anything else
on your mind....”***



***“...I’m available anytime for
a toll free chat with you!”***

And by the way...

You can also visit us at our website,
www.garyposnerinc.com—where you
also will find our vast up to date stock. It’s
a User-Friendly site with jumbo images and
‘easy-on-the-pocket’ prices. See for yourself
that it is ‘a site with a difference.’

Gary Posner

Bobby Prager

What our clients think:

*“Of all the dealers I have encountered, you
two are clearly the most professional. I
know that when I buy from you the material
is legititmate and the quality is as adver-
tised.”...Lawrence Eagleburger, former U.S. Secy. of State*

Your hobby is alive and well at...



GARY POSNER, INC.

30+ years in business • 800.323.4279 • Fax 516-599-2145
265 Sunrise Highway, Ste. 1-308, Rockville Centre, NY 11570
Cell: 917-538-8133 • **GaryPosnerInc@aol.com**

Bobby Prager has as-
sisted thousands of
discriminating philat-
elists in forming out-
standing collections.
His reputation as a
respected consultant is
built on the caring one-
on-one relationship he
has with his clients.

If you’re selling...

We’d rather pay a
more than fair price
and buy 90% of the
collections offered
to us than make a big
score on 10% with
low-ball offers.

***Visit us and view our fabulous stock at
www.garyposnerinc.com***

Stamp Identification: **Identifying the One Cent Washington-Franklins**

by John F. Dunn

(This study is from our new set of United States Reference Manual pages, identifying the complete Washington-Franklin issue by denomination. See page 13 for more information on the United States Reference Manual.)

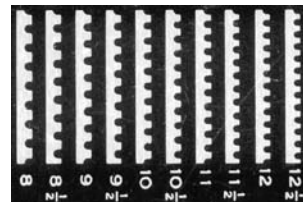
With more than 40 different ONE CENT or 1 CENT Washington-Franklin Head major listings, we will break this study into distinctive groups. In this section, we will focus on the first group, the One Cent issues, that is those stamps that present the denomination in words. Even though Universal Postal Union rules called for expressing denominations in numerals (to ease handling of international mail), the One Cent design was in use for more than three years before being replaced by 1 Cent stamps.

During this period, the Bureau of Engraving and Printing experimented with a variety of papers, perforation sizes and watermarks in an effort to find the ideal combination. As a result, there are eleven different major varieties, as well as additional minor varieties, in the One Cent group.

On pages 3 and 4 we illustrate all of these One Cent Washington-Franklin major varieties. Now, let's say you are holding a One Cent Washington-Franklin stamp you want to identify. You can start from a number of points, but the simplest approach is to start by measuring the perforations.

Here is the portion of a typical perf gauge you will need:

Using this simplified gauge, you can identify the perf size for your stamp, then proceed as follows.



If you enjoy this article, and are not already a subscriber, for \$12 a year you can enjoy 60+ pages a month. To subscribe, email subs@stampnewsnow.com

The Perf 12s

• If it's perf 12 all around, it's either Scott 331, 357, or 374. To distinguish between these three, check the watermark. We show examples of the single and double line watermarks in reverse because that is how they would show in watermark fluid, with the stamp face down. (Note that even though we show the complete set of letters here, you will only see a small portion of the watermark on each stamp.)



• For your One Cent stamp, if it has a single line watermark (left), it's 374.

• If it has a double line watermark (right), it's either 331 or 357.

Now the color of the paper comes into play, because 357 is the more valuable Bluish paper.

• If the paper has a whitish or yellowish hue, it's 331.

• If the paper appears to have a bluish or bluish gray tint, it may be 357. (One simple way to make a comparison is to keep on hand a known non-bluish paper. If you think you have a bluish paper, it may have been chemically altered, so submitting the stamp to an expertizing service is recommended.)

• Going back to the perforations, if your stamp is only perforated horizontally, and the perf gauge is 12, it's either 348 or 385.

• If it has a double line watermark it is 348;

• If it has a single line watermark it is 385.

• If your stamp is only perforated vertically and the perf is 12, it's either 352 or 387.

• If it has a double line watermark it is 352;

• If it has a single line watermark it is 387.

The Perf 8-1/2s

• If your stamp is only perforated horizontally, and the perf gauge is 8-1/2, it's 390;

• If your stamp is only perforated vertically, and the perf gauge is 8-1/2, it's 392.

(Incidentally, the One Cent perf 8-1/2s only come on single line watermark paper, so if you want to have ref-

erence pieces with single line watermarks, off center or heavily cancelled used 390s can be obtained for a modest investment.

The Imperfs

- If your stamp is imperforate, it's either 343 or 383.
- If it has a double line watermark it is 343;
- If it has a single line watermark it is 383.

File page: 1.0331.0.120.110

11/01/11



1908-09
Franklin
Sheet
Perf 12
Flat Plate
Double Line
Scott 331



1909
Franklin
Sheet
Perf 12
Flat Plate
Double Line
Bluish paper
Scott 357



1908-09
Franklin
Sheet
Perf 12
Flat Plate
Double Line
Scott 374



1908-10
Franklin
Coil
Perf 12 Horiz.
Flat Plate
Double Line
Scott 348



1910
Franklin
Coil
Perf 12 Horiz.
Flat Plate
Single Line
Scott 385



1910-13
Franklin
Coil
Perf 8.5 Horiz.
Flat Plate
Single Line
Scott 390



1909
Franklin
Coil
Perf 12 Vert.
Flat Plate
Double Line
Scott 352



1910
Franklin
Coil
Perf 12 Vert.
Flat Plate
Single Line
Scott 387



1910-13
Franklin
Coil
Perf 8.5 Vert.
Flat Plate
Single Line
Scott 392



1908-09
Franklin
Sheet
Imperf
Flat Plate
Double Line
Scott 343

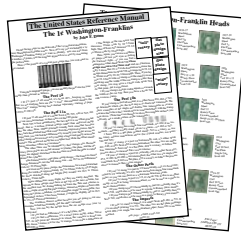


1910
Franklin
Sheet
Imperf
Flat Plate
Single Line
Scott 383

*See pages 5 and 6 for information on
the United States Reference Manual*

If you enjoy this article, and are not already a subscriber, for \$12 a year you can enjoy 60+ pages a month. To subscribe, email subs@stampnewsnow.com

The U.S. Reference Manual!



New Pages!! "Telling Them Apart"

**A complete study of ALL
of the Washington-Franklin
Heads by denomination
with information on how to
identify each one!**

• **The Complete "How to Tell Them Apart" Study**
**58 FULL COLOR pages, covering Scott 331 // 547, with each
denomination treated separately and in depth.....\$39.50**

Also available in black & white pages.....\$19.50

• **Also available, a personalized 2" Reference Manual ring binder with
spine insert and *your name on the front cover!**.....\$9.50**

* *Please print clearly the name as you want it to appear on the cover.*

For Visa, M/Card, Discover & Amer. Expr. orders, card #
(including 3-digit code on back) & expiration date:

Send Check, Money Order, or Charge Card Data to:
Stamp News, 42 Sentry Way, Merrimack, NH 03054
phone 603-424-7556, fax 800-977-7550,
subs@stampnewsnow.com



*The One Cent pages reproduced here are from this
"Telling Them Apart" study.*

See page 6 for additional U.S. Reference Manual page sets

The U.S. Reference Manual!



NEW: The Complete "How to Tell Them Apart" Study

58 FULL COLOR pages, covering Scott 331 // 547, with each denomination treated separately and in depth.....\$39.50

Also available in black & white.....\$19.50

• **Also recently published:**

• **The Washington-Franklins, Part 1, Sc. 331-366, 374-396**

58 pages, including helpful identifiers, background information, earliest known and other covers, and more in full color...\$32.50

Also available in black & white.....\$16.50

• **The United States Grills, Sc. 79 // 144A.** 20 information-packed black & white pages, complete with high definition photos—including fakes—based on the expert writing of Wm. L. Stevenson and Lester G. Brookman....\$9.00

• **1919-1932 Commems**, a black & white reprint of the Manual pages covering Sc. 537 // 715.....\$11.50

• **Bank Notes 1 (Scott 134-191)**

62 pages, including helpful identifiers, secret mark illustrations, postal history and more.....\$13.50

• **Bank Notes Part 2 (Sc. 205-29, 246-53)**

54 pages, including helpful identifiers, secret mark illustrations, postal history and more.....\$13.50




• **Columbians & Trans-Mississippis**

79 pages, an in-depth study of both popular issues.....\$14.50

• **U.S. Provisionals, Airs, Back-of-Book**

64 pages, including Provisionals in depth, some early airs, Locals, Postage Dues, and Offices in China.....\$15.50

• **FOR YOUR PAGES: a personalized 2" Reference Manual ring binder with spine insert and *your name on the front cover!*...\$9.50**

 For Visa, M/Card, Discover & Amer. Expr. orders, card # 
(including 3-digit code on back) & expiration date: 

Send Check, Money Order, or Charge Card Data to:
Stamp News, 42 Sentry Way, Merrimack, NH 03054
phone 603-424-7556, fax 800-977-7550, subs@stampnewsnow.com