

# *World of Stamps:* **Prince Edward Island(s)**

By Geir Sør-Reime

## **PEI—Canada**

Prince Edward Island is Canada's smallest province, with an area of just 2,190 square miles and a population of 140,000 people.

The island is named after the father of British queen Victoria, Prince Edward, Duke of Kent and Strathearn, fourth son of king George III.

Originally inhabited by the Mikmaq Indians, French explorer Jacques Cartier was the first European to visit the island, in 1534. It was then named Ile Saint-Jean (St. John's Island). It was captured by the British in 1745, but came under firm British control only after 1763 and was then called St. John's Island. The name was changed to Prince Edward's Island in 1798.

When the Canadian Confederation was formed in 1867, Prince Edward Island opted to stay outside and remain a British colony, even negotiating with the U.S. for a possible entry into the USA.

In the end, Prince Edward Island joined the Canadian Confederation in 1873. In 1864, Charlottetown, the capital of Prince Edward Island, in fact hosted a conference that eventually led to the formation of the Canadian Confederation. The centenary of this conference was marked with a single 1964 stamp, showing the Fathers of the Confederation Memorial in Charlottetown.



*Left, 1973 for centenary of Prince Edward Island's entry into the Confederation (Sc. 618); right, 1964 centenary of Charlottetown conference which led to the formation of the Canadian Confederation (Sc. 431)*

Prince Edward Island issued its first stamps in 1861, featuring a portrait of Queen Victoria. Originally, these

**If you enjoy this article, and are not already a subscriber, for \$12 a year you can enjoy 60+ pages a month. To subscribe, email [subs@stampnewsnow.com](mailto:subs@stampnewsnow.com)**



1861 Sc. 1

were issued with very coarse perforations, but were re-issued the following year with finer gauge perforations. Further stamps, also with the Queen's portrait, were issued until 1872. This last issue was in decimal



1862 Sc. 8

currency, as opposed to the previous issues in pound-shilling-pence currency. In theory, the decimal currency issues of Prince Edward Island (and the other provinces that issued their own stamps) are said to still be valid for postage in Canada.



1868 Sc. 9



1870 Sc. 10



1872 Sc. 11

Canadian stamps with links to Prince Edward Island include the 1946 stamp showing the railway ferry connecting the island with the mainland.



1946 showing train ferry to Prince Edward Island (Sc. 273)



1962 opening of Trans-Canada Highway, arms of all Canadian provinces (Sc. 400)

The arms of all Canadian provinces were shown on the 1962 stamp for the opening of the Trans-Canada Highway, and provincial emblems appeared on a 1964-66 series, the arms and provincial flower of Prince Edward Island



1964 provincial arms and flower of Prince Edward Island (Sc. 424)

on a 1964 stamp.

The bicentenary of Charlottetown as capital of Prince Edward Island was celebrated with a 1969 stamp showing a map of the province, and in 1973, a single stamp commemorated the province's entry into the Canadian Confederation. The flags of all provinces were shown on stamps issued in a 1979 souvenir sheet.



1979 flag of Prince Edward Island, cropped from 1979 Canada Day sheetlet (Sc. 827)



1981 evolution of Canadian confederation, here provinces that had joined by 1873, including Prince Edward Island



A set of 1981 stamps showed the evolution of the Canadian Confederation, and one stamp showed the 1873 accession of Prince Edward Island.



Left to right: 1984 Canada Day, landscape paintings by Jean Paul Lemieux, here from Prince Edward Island (Sc. 1022); 1993 Canada Day, from Cedar Dunes National Park, Prince Edward Island (Sc. 1474); 1992 Canada Day, scenery of Prince Edward Island (Sc. 1422)

Paintings from each province appeared on the 1982 Canada Day souvenir sheet, from Prince Edward Island, a painting entitled "Till Hill" was depicted. Paintings by Jean Paul Lemieux featuring the provinces appeared on the 1984 Canada Day souvenir sheet. Another painting from Prince Edward Island was included in the 1992 Canada Day souvenir sheet. A scene from the Cedar Dunes National Park on Prince Edward Island was included in the 1993 Canada Day souvenir sheet.

An extremely important event for the province was the 1997 opening of the Confederation Bridge from the main-





1997 Opening of the Confederation Bridge (Sc. 1646a)

land to Prince Edward Island. This was celebrated with two se-tenant stamps.



1998 Provincial Leaders, here J. Walter Jones, Premier of Prince Edward Island 1943-1953 (Sc. 1709j)

The 1998 Canada Day souvenir sheet featured premiers of the Canadian provinces, and J. Walter Jones, Prince Edward Island premier 1943-53 represented this province.



1998 Scenic Highways, here the Blue Heron Route on Prince Edward Island (Sc. 1742)

The Blue Heron Route on Prince Edward Island was included in the 1997-98 Scenic Highways stamp issue.



2004 for bicentenary of University of Prince Edward Island (Sc. 2034)

The bicentennial of the University of Prince Edward Island was celebrated with a 2004 stamp. A 2005 Canadian Flag stamp shows the flag over houses in New Glasgow on Prince Edward Island.



2005 Flag over New Glasgow, Prince Edward Island (Sc. 2135)

In 2011, a large potato placed outside the Prince Edward Island community of O'Leary appeared on one of the Roadside Attractions stamps.



2011, Large Potato at O'Leary, Prince Edward Island: left, normal gum and perforations issue; right self-adhesive, free-form from booklets

## PEI—Antarctica

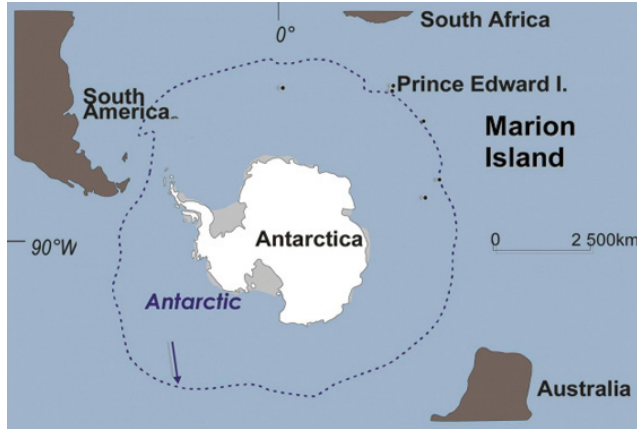
“The other”

Prince Edward Islands is a group of two sub-Antarctic islands south of South Africa and part of that country. The two islands are Prince Edward Island and Marion

Island. They have a combined area of 129.3 square miles. There are no permanent residents, but there is a South African meteorological station on Marion.

The islands were first reported in 1663 by Barent Barentszoon Lam, and were also visited by Marion du Fresne in 1772, and by James Cook in 1776. He gave the islands their current names, Prince Edward Island (the fourth son of King George III) and Marion (in honor of du Fresne). The first recorded landing was in 1803, however, by American sealers led by Henry Fanning.

A few attempts at settlement were made in the early 19th century, and on December 29, 1947, South African forces landed on Marion Island and annexed it for South Africa. They did the same on Prince Edward Island on January 4, 1948.



*Monument to Marion du Fresne, who was killed in New Zealand by Maori natives*



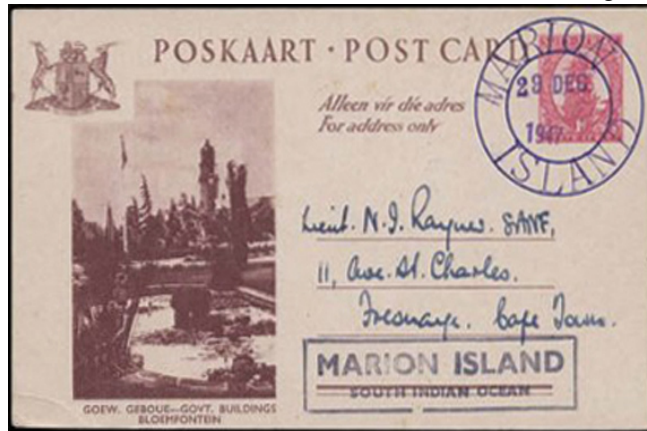
The meteorological station on Marion has been active since January 28, 1948. Mail originating from the station often displays one or more cachets, but an official post office with a distinctive canceller was not opened until March 24, 1958. The first postmark featured a map showing the lo-



South Africa 1982 stamp showing station on Marion Island (Sc.611)



and a recent photo of the meteorological station



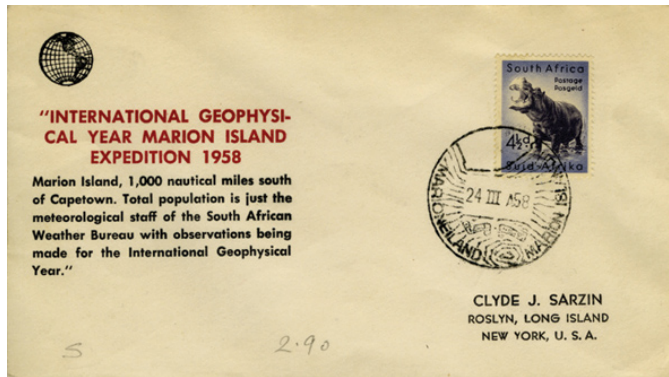
South Africa 1p postal card bearing the first Marion Island canceller known, the large violet "Marion Island" double circle, dated December 29, 1947, also with a boxed "Marion Island/South Indian Ocean" handstamp.



cation of Marion in relation to South Africa. Already on March 31, 1962, it was replaced by a new one showing a map of Marion Island. There exist two different cancellers with the same motif. A third type of postmark was introduced April 5, 1978, showing a relief vessel and a penguin. This postmark was in use until the Postmaster-General of South Africa decided to withdraw the postmarks of both Marion Island and of the South African

Top, 1st, 1958-1962, postmark of Marion Island; bottom, 3rd, 1978-1980 postmark

Antarctic station SANAE in July 1980. After that date, a number of cachets have been applied to mail posted on board the relief vessels off Marion Island.

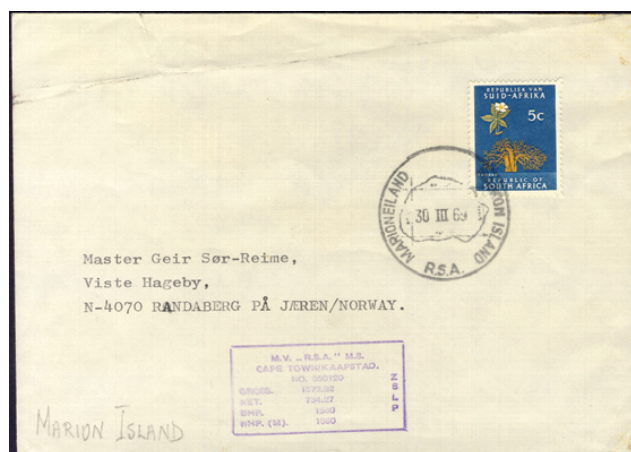


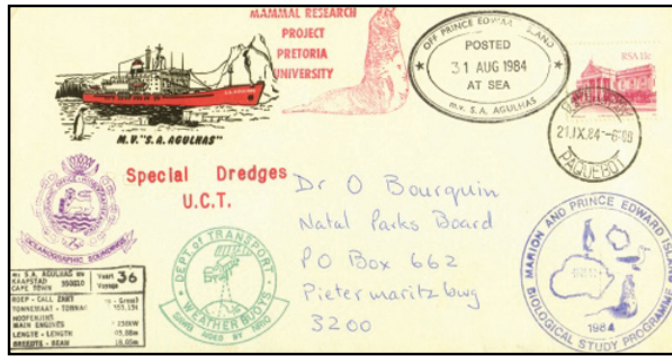
1958 Clyde Sarzin cachet for IGY with canceler applied to RSA stamp on March 24, 1958, the first day of operation of the Marion Island post office



Department of Transport corner card on 1973 cover with 4c RSA stamp tied by Marion Island Map design and Marion & Prince Edwards Research team cachet, also with "Thirtieth Relief Team" cachet upper left and cachet of the supply vessel

1969 cover cancelled on Marion Island, also featuring the cachet of supply vessel "R.S.A." The postmark is the second of the second design.





Two covers, top August 29, 1982, bottom August 31, 1984 from the paqueboat, M.V.S.A. "Agulhas" during Prince Edward Island Research expeditions.



These and other covers can be seen at

<http://www.newzeal.com/theme/bases/SANAE/sanae.htm>

If you enjoyed this article, and are not already a subscriber, for \$12 a year you can enjoy 60+ pages a month. To subscribe, email [subs@stampnewsnow.com](mailto:subs@stampnewsnow.com)